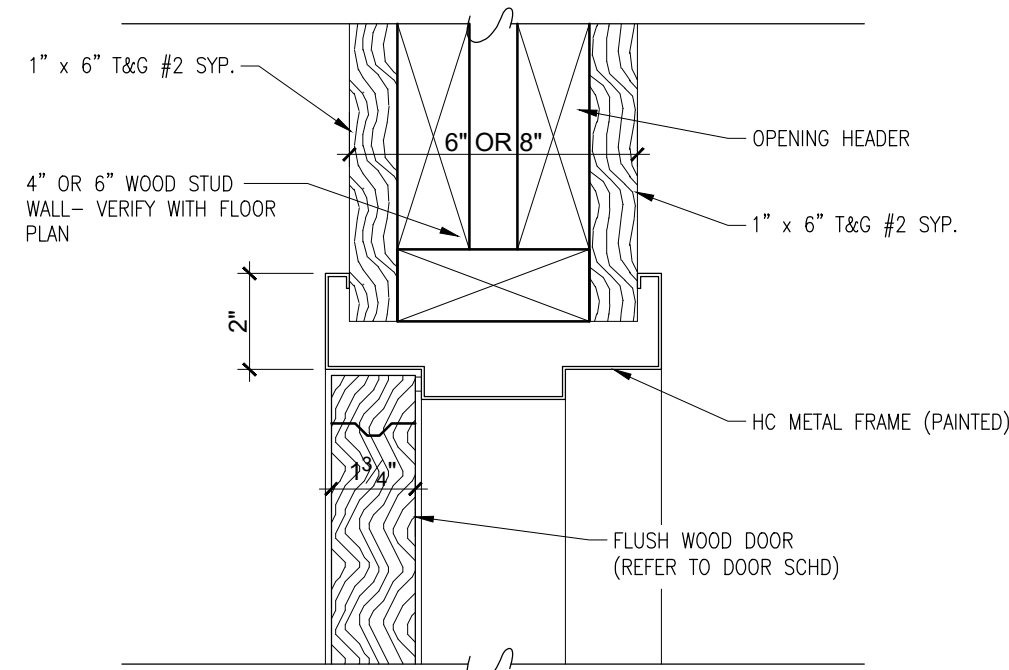
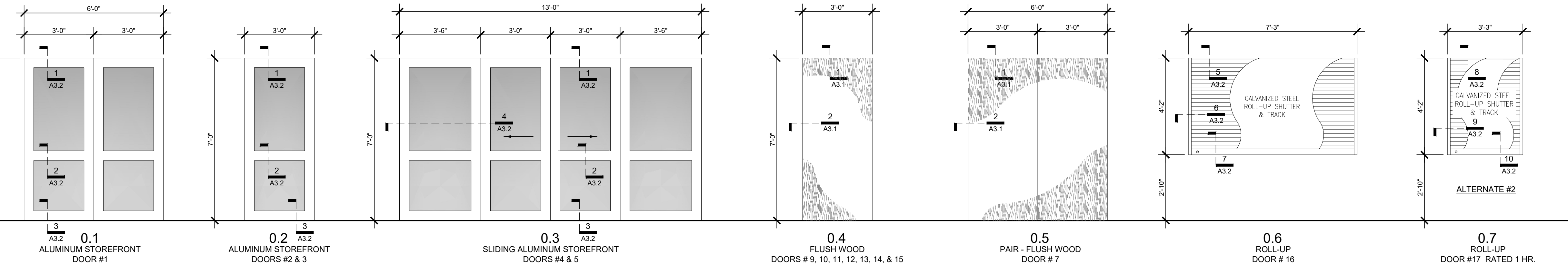
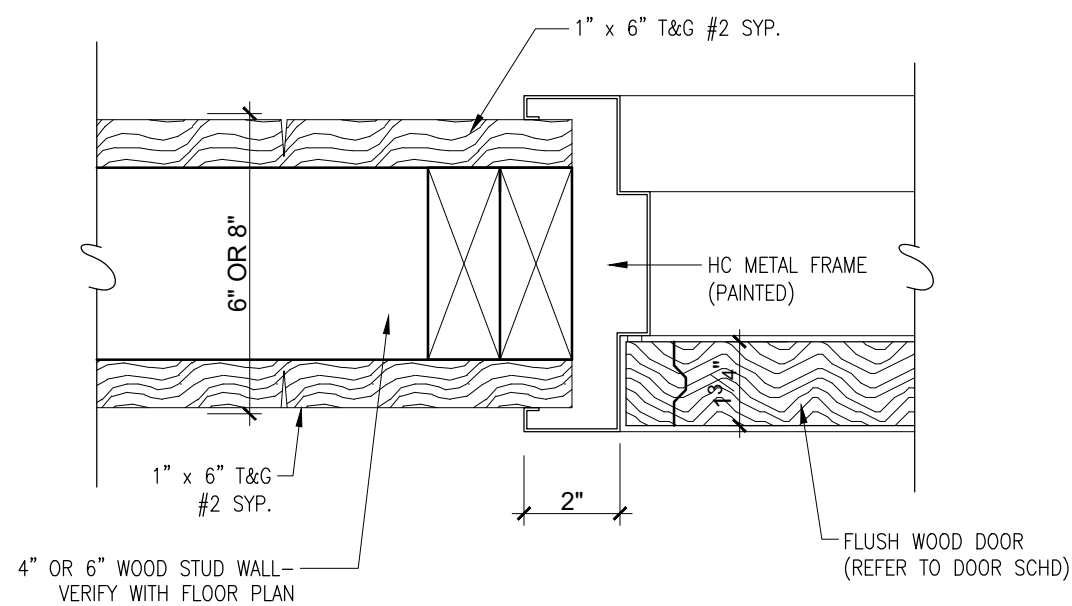


OPENING SCHEDULE												
MARK	SIZE	GRADE	RATED	ELEV TYPE	DESCRIPTION	MATERIAL			HEAD	JAMB	THRESH OR SILL	REMARKS
						DOOR	FRAME	GLAZING				
DOORS												
1	3'-0" x 7'-0" x 1 3/4" - PAIR	EXTERIOR	-	0.1	ALUMINUM STOREFRONT	ALUMINUM	ALUMINUM	DBL. INSULATED,TEMP				W/ INTEGRAL MID RAIL PANIC BAR & CLOSER
2	3'-0" x 7'-0" x 1 3/4"	EXTERIOR	-	0.2	ALUMINUM STOREFRONT	ALUMINUM	ALUMINUM	DBL. INSULATED,TEMP				W/ INTEGRAL MID RAIL PANIC BAR & CLOSER
3	3'-0" x 7'-0" x 1 3/4"	EXTERIOR	-	0.2	ALUMINUM STOREFRONT	ALUMINUM	ALUMINUM	DBL. INSULATED,TEMP				W/ INTEGRAL MID RAIL PANIC BAR & CLOSER
4	3'-0" x 7'-0" x 1 3/4" - PAIR SLIDING	INTERIOR	-	0.3	ALUMINUM STOREFRONT	ALUMINUM	ALUMINUM	DBL. INSULATED,TEMP				
5	3'-0" x 7'-0" x 1 3/4" - PAIR SLIDING	INTERIOR	-	0.3	ALUMINUM STOREFRONT	ALUMINUM	ALUMINUM	DBL. INSULATED,TEMP				
6	3'-0" x 7'-0" x 1 3/4" - PAIR	INTERIOR	-	0.5	FLUSH WOOD DOOR	WOOD	H.C.METAL	N/A	1/A3.1	2/A3.1	N/A	RATED ONE HOUR
7	3'-0" x 7'-0" x 1 3/4" - PAIR	INTERIOR	-	0.5	FLUSH WOOD DOOR	WOOD	H.C.METAL	N/A	1/A3.1	2/A3.1	N/A	
8	3'-0" x 7'-0" x 1 3/4" - PAIR	INTERIOR	-	0.4	FLUSH WOOD DOOR	WOOD	H.C.METAL	N/A	1/A3.1	2/A3.1	N/A	RATED ONE HOUR
9	3'-0" x 7'-0" x 1 3/4"	INTERIOR	-	0.4	FLUSH WOOD DOOR	WOOD	H.C.METAL	N/A	1/A3.1	2/A3.1	N/A	
10	3'-0" x 7'-0" x 1 3/4"	INTERIOR	-	0.4	FLUSH WOOD DOOR	WOOD	H.C.METAL	N/A	1/A3.1	2/A3.1	N/A	
11	3'-0" x 7'-0" x 1 3/4"	INTERIOR	-	0.4	FLUSH WOOD DOOR	WOOD	H.C.METAL	N/A	1/A3.1	2/A3.1	N/A	
12	3'-0" x 7'-0" x 1 3/4"	INTERIOR	-	0.4	FLUSH WOOD DOOR	WOOD	H.C.METAL	N/A	1/A3.1	2/A3.1	N/A	
13	3'-0" x 7'-0" x 1 3/4"	INTERIOR	-	0.4	FLUSH WOOD DOOR	WOOD	H.C.METAL	N/A	1/A3.1	2/A3.1	N/A	
14	3'-0" x 7'-0" x 1 3/4"	INTERIOR	-	0.4	FLUSH WOOD DOOR	WOOD	H.C.METAL	N/A	1/A3.1	2/A3.1	N/A	W/ CLOSER
15	3'-0" x 7'-0" x 1 3/4"	INTERIOR	-	0.4	FLUSH WOOD DOOR	WOOD	H.C.METAL	N/A	1/A3.1	2/A3.1	N/A	W/ CLOSER
16	7'-0" x 4'-2"	INTERIOR	-	0.6	MANJAL ROLL-UP OVERHEAD SHUTTER	STEEL ROLL-UP	GALVANIZED STEEL	N/A	13/A3.2	15/A3.2	14/A3.2	
17	3'-0" x 4'-2" (ALTERNATE #2)	INTERIOR	-	0.7	MANJAL ROLL-UP OVERHEAD SHUTTER	STEEL ROLL-UP	GALVANIZED STEEL	N/A	13/A3.2	15/A3.2	14/A3.2	RATED ONE HOUR
18	6'-0" x 8'-0"	EXTERIOR	-	0.8	METAL ROLL-UP OVERHEAD	METAL ROLL-UP	H.C. METAL	N/A				
19	8'-0" x 8'-0"	EXTERIOR	-	0.9	METAL ROLL-UP OVERHEAD	METAL ROLL-UP	H.C. METAL	N/A				
20	3'-0" x 7'-0" x 1 3/4"	EXTERIOR	-	0.10	METAL	METAL	H.C. METAL	N/A				
MARK	SIZE	GRADE	RATED	ELEV TYPE	DESCRIPTION							
WINDOWS												
A	3'-0" W x 6'-0" H	EXTERIOR	-	0.11	ALUMINUM STOREFRONT SYSTEM							
B	6'-0" W x 2'-0" H (ALTERNATE #3)	EXTERIOR	-	0.12	ALUMINUM STOREFRONT SYSTEM - RATED 1 HOUR							
ALUMINUM STORE FRONT SYSTEM SHALL BE IN WHITE ANODIZED ALUMINUM FINISH - EXTERIOR GLAZING TO BE DOUBLE PANE, LOW-E, INSULATED GLASS W/ SOLEX UV REDUCING TINTING INTERIOR WOOD DOORS ARE TO BE PREMIUM GRADE RIFT SAWN RED OAK- (STAINED TO MATCH WITH PINE COMPONENTS) - REFER TO DOOR & WINDOW HARDWARE SUBMITTAL ABBREVIATIONS: SC (SOLID CORE) ; HC (HOLLOW CORE) ; SFS (STOREFRONT SYSTEM) ; TEMP (TEMPERED GLASS) ; SYP (SOUTHERN YELLOW PINE)												

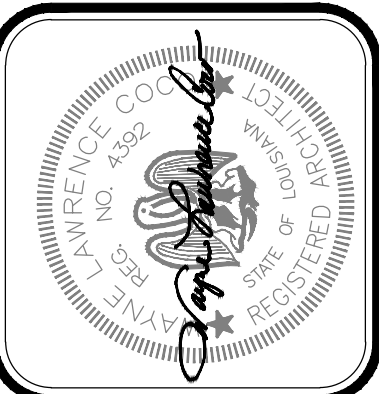
INTERIOR FINISH SCHEDULE										
ROOM NAME	ROOM NUMBER	FLOOR	BASE	WALLS				CEILING & CEILING TRIM	CEILING HEIGHT	REMARKS
				EAST	SOUTH	WEST	NORTH			
ENCLOSED PLUMBING CHASE	101	F5	N/A	N/A	N/A	N/A	N/A	C3	10'-0" +/-	
COVERED OPEN AREA	102	F4	N/A	N/A	N/A	N/A	N/A	C3	10'-0" +/-	
STAIR 1	103	N/A	N/A	N/A	N/A	N/A	N/A	N/A	N/A	
STAIR 2	104	N/A	N/A	N/A	N/A	N/A	N/A	N/A	N/A	
STAIR 3	105	N/A	N/A	N/A	N/A	N/A	N/A	N/A	N/A	
ENTRY PLATFORM	201	F6	N/A	N/A	N/A	N/A	N/A	N/A	----	
CORRIDOR	202	F2	B1	W1	W1	W1	W1	N/A	10'-0"	
MULTI-PURPOSE ROOM	203	F2	B3	W3	W3	W3	W3	N/A	VARIES	OPEN TO STRUCTURE
SCREENED PORCH	204	F4	B3	W4/W3	W4/W3	W3	W4/W3	C1	VARIES	
TABLE & CHAIRS	205	F2	B1	W1	W1	W1	W1	C2	10'-0"	
JANITOR	206	F2	B1	W1	W1	W1	W1	C2	10'-0"	
KITCHEN/SERVING	207	F2	B1	W2	W2	W2	W2	CT	10'-0"	WATERPROOF CEILING TILE
PANTRY	208	F2	B1	W1	W1	W1	W1	CT	10'-0"	
ELEC/UTILITY	209	F2	B1	W1	W1	W1	W1	CT	10'-0"	
MECH 1	210	F2	B1	W1	W1	W1	W1	CT	10'-0"	
FOYER	211	F2	B1	W1	W1	W1	W1	CT	10'-0"	
MEN	212	F7	B2	W2	W2	W2	W2	CT	10'-0"	WATERPROOF CEILING TILE
MEN SHOWER	213	F7	B2	W2	W2	W2	W2	CT	10'-0"	
WOMEN	214	F7	B2	W2	W2	W2	W2	CT	10'-0"	
WOMEN SHOWER	215	F7	B2	W2	W2	W2	W2	CT	10'-0"	
SCHEDULE KEY										
FLOOR TYPES			BASE TYPES			WALL TYPES			CEILING & CEILING TRIM TYPES	
F1	SCORED LIGHT BROOM FINISH		B1	6" RUBBER BASE		W1	5/8" TYPE 'X' GWB - PAINTED		C1	1" x 6" V-GROOVE #2 SYP BOARDS
F2	CONCRETE PAVING		B2	PORCELAIN TILE		W2	FRP PANELS		C2	2" x 2" ACOUSTICAL TILE
F3	4" x 36" NOM. 20 MIL. LTV BY SHAW		B3	1" x 6" SYP		W3	1" x 6" V-GROOVE #2 SYP BOARDS		C2	5/8" TYPE 'X' GWB - PAINTED
F4	EXPOSED CONCRETE					W4	SCREENED PORCH		C3	METAL DECK
F5	CRUSHED STONE									
F6	METAL DECK									
F7	6" x 6" PORCELAIN TILE									



1 HEAD DETAIL OF TYPICAL INTERIOR DOOR
SCALE= 3/8"= 1'-0"



2 JAMB DETAIL OF TYPICAL INTERIOR DOOR
SCALE= 3/8"= 1'-0"



Project No. 0225
Drawn By: BP
Approved By: WAYNE L. COCO
Preliminary Date: MARCH 31, 2026
Release Date: File:

WAYNE LAWRENCE COCO, AIA, ARCHITECT, L.L.C.
P.O. BOX 111 - 510 MAIN ST.
SIMMESPORT, LOUISIANA 71369
318.359.3732 / FAX 318.941.2821
Coco & Company
a professional architectural company

FUTURE FARMERS OF AMERICA
CONFERENCE CENTER
MANSURA, LOUISIANA AT OLD RIVER

Sheet Number:
A3.1
7 of 40